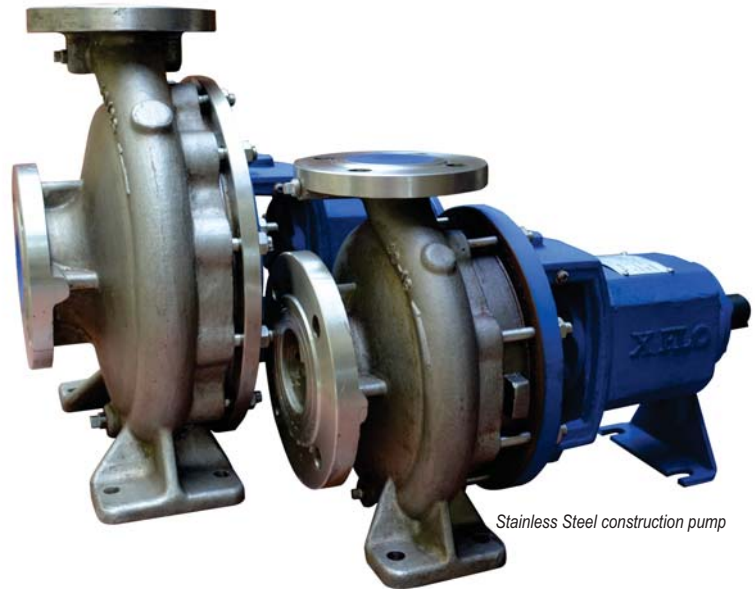


Applications

- Industrial liquids and chemicals
- Oils, solvents and process liquids
- Water supply
- Seawater
- Heating circulation and Cooling water
- Food and beverage industry

Performance

Flow rates up to 300 l/sec max
 Head up to 140 metres max
 Temperature -20°C to +150°C
 Speed : 1450 - 2900 rpm (50 Hz)
 1750 - 3500 rpm (60 Hz)



Stainless Steel construction pump

Construction

XD Horizontal single stage end-suction pump with performance and key dimensions in accordance with DIN 24255 standard and for XDI Series DIN 24256 (ISO 2858). The back-pull-out construction allows the pump to be dismantled without disturbing the suction and discharge pipework. Impellers are fully shrouded closed design, with double curvature vanes for optimum efficiency and good suction performance. Vortex design semi-open impellers are also available on some sizes.

Materials of construction

To be compatible with the liquid being pumped and pumps pressure containing parts are available cast in varian of materials.

Parts	Standard Material	Available optional Material
Volute Casing	Cast Iron	SS304,316,Bronze,
Impeller	SS304	SS316,Bronze, Iron
Shaft	SS420	SS 316, Duplex SS
Shaft Sealing	Mechanical Seal Sic-viton®	Double Seal Face with Flushing

Flanges

Standard flanges are drilled to the British Standard BS4504, with pressure rating to suit the specific application:

- BS4504 PN16 16 bar working pressure
- BS4504 PN25 25 bar working pressure
- BS4504 PN40 40 bar working pressure

ANSI standard flanges drilled to 150 lb or 300 lb ratings and all other standards are available on request.

Seals

A Packed gland seal or single mechanical seal is supplied as standard. Double mechanical seals and cartridge seals can be fitted to suit the application and to meet customers' preferences.

Reduce Inventory Of Spare parts

Only five shaft modules to cover all entire ranges of all over fifty pumps size, all pumps common to one shaft module have identical bearing carrier, bearing, sleeves and seals.

Widest choice of materials of construction and options to suit many industrial and building services specific requirements. Stainless steel pumps built from stock components.

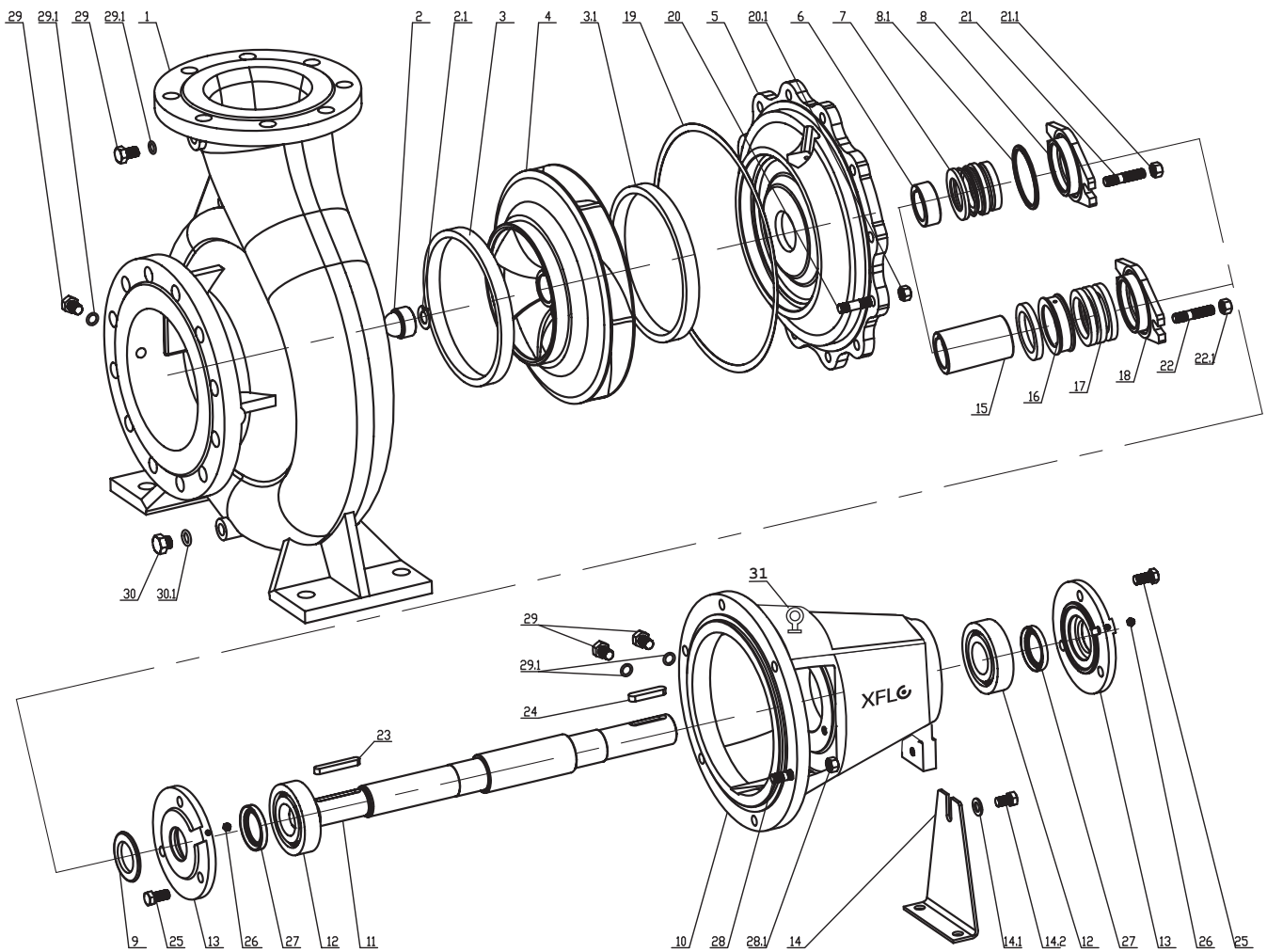
Competitively priced and manufactured from components held in stock, with reliable prompt deliveries.

Pumps can be supplied as bare shaft unit and in many other arrangements including complete with coupling, guard, base plate and either electric motor or engine driven.

All pumps are manufactured strictly to ISO 9001 quality control standards.



Standard material pump come with Ultra Cast of SUS 304 Impeller



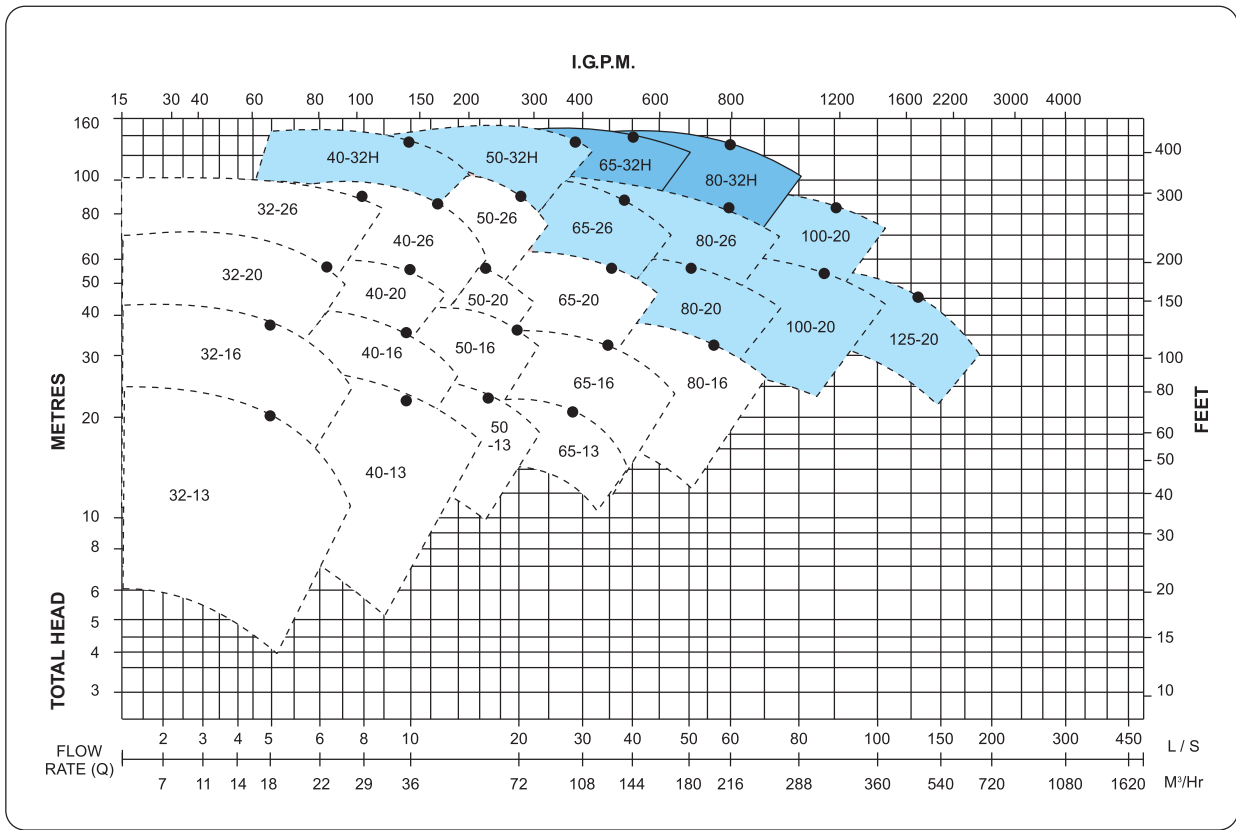
Item	Part Name	Qty
1.	Casing	1
2.	Impeller Nut	1
2.1	lock washer for impeller	1
3.	Front-Wear Ring	1
3.1	Back-Wear Ring	1
4.	Impeller	1
5.	Casing Cover	1
6.	Shaft Spacer	1
7.	Mechanical seal	1
8.	Seal cover	1
8.1	"O" Sealing Cover	1
9.	Rubber Slinger	1
10.	Bearing Housing	1
11.	Shaft	1
12.	Bearing	2
13.	Bearing Cover	2
14.	Support Foot	1
14.1	Screw Bolt	1
14.2	Screw Nut	1
15.	Packing Sleeve	1
16.	Packing seal cage	1
	Guide Sleeve	1

Item	Part Name	Qty
17.	Gland Packing	1 set
18.	Gland Cover	1
19.	Paper Casing Gasket	1
20.	Stud Bolt	1 set
20.1	Screw Nut	1 set
21.	Stud Bolt	1 set
21.1	Screw Nut	1 set
22.	Screw Nut	1 set
22.1	Stud Bolt	1 set
23.	Key	1
24.	Key	1
25.	Screw Bolt	2 set
26.	Oil Nipple M6	2
27.	Felting	2
	Oil Seal	2
28.	Stud Bolt	1 set
28.1	Screw Nut	1 set
29.	Plug	1
29.1	Plug Spacer	1
30.	Plug	1
30.1	Plug spacer	1
31.	Eye ring	1

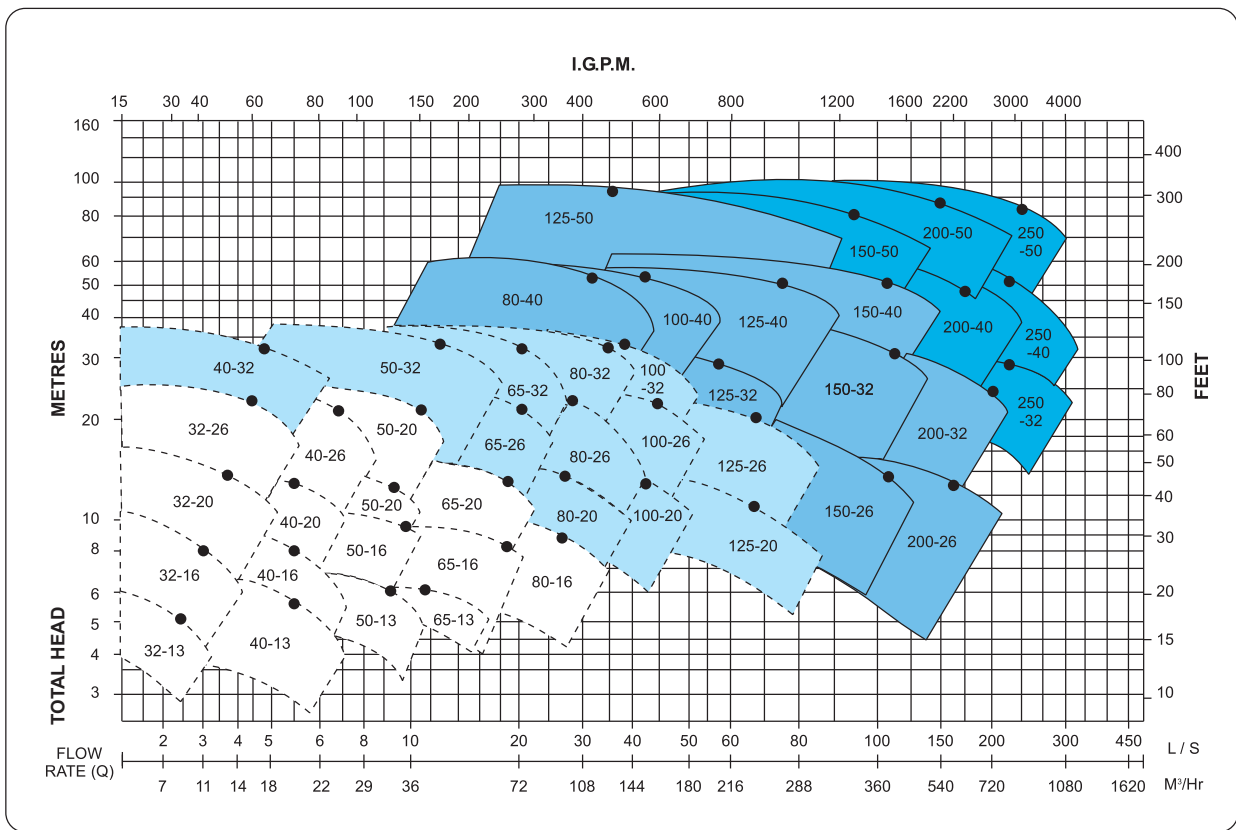
SELECTION CHART

XD-50 Hz

2900 rpm

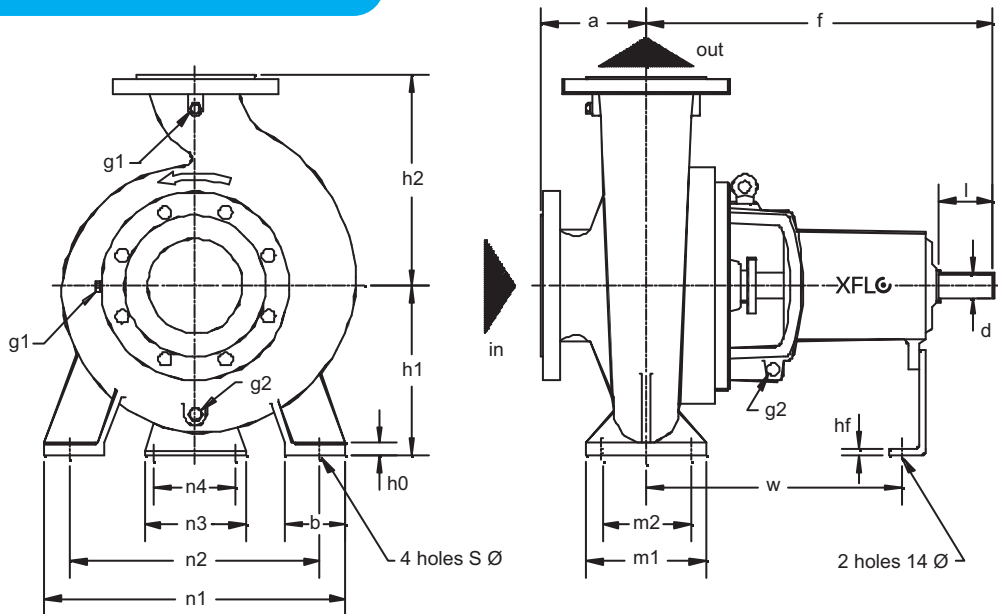


1450 rpm

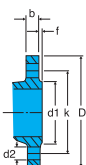


Note : For Final Selection Please refer to pump individual curve

XD Bareshaft pump dimensions



PUMP SIZE	BEARING HOUSING	INLET	OUTLET	PUMP DIMENSIONS				FOOT DIMENSIONS										SHAFT END		COUPLING KEY	NET WEIGHT (kg)
				a	f	h1	h2	b	m1	m2	n1	n2	n3	h3	Øs1	Øs2	w	d	l		
32 - 13	25	50	32	80	360	112	140	50	100	70	190	140	100	14	14	14	267	24	50	8 x 7	28
32 - 16	25	50	32	80	360	132	160	50	100	70	240	190	100	14	14	14	267	24	50	8 x 7	36
32 - 20	25	50	32	80	360	160	180	50	100	70	240	190	110	14	14	14	267	24	50	8 x 7	43
32 - 26	25	50	32	100	360	180	225	65	125	95	320	250	110	14	14	14	267	24	50	8 x 7	63
40 - 13	25	65	40	80	360	112	140	50	100	70	210	160	100	14	14	14	267	24	50	8 x 7	31
40 - 16	25	65	40	80	360	132	160	50	100	70	240	190	100	14	14	14	267	24	50	8 x 7	37
40 - 20	25	65	40	100	360	160	180	50	100	70	265	212	110	14	14	14	267	24	50	8 x 7	46
40 - 26	25	65	40	100	360	180	225	65	125	95	320	250	110	14	14	14	267	24	50	8 x 7	63
40 - 32	35	65	40	125	470	200	225	65	125	95	345	280	110	14	14	14	342	32	80	10 x 8	96
40 - 32H	35	65	40	125	470	200	225	65	125	95	345	280	110	14	14	14	340	32	80	10 x 8	96
50 - 13	25	65	50	100	360	132	160	50	100	70	240	190	100	14	14	14	267	24	50	8 x 7	34
50 - 16	25	65	50	100	360	160	180	50	100	70	265	212	110	14	14	14	267	24	50	8 x 7	38
50 - 20	25	65	50	100	360	160	200	50	100	70	265	212	110	14	14	14	267	24	50	8 x 7	48
50 - 26	25	65	50	100	360	180	225	65	125	95	320	250	110	14	14	14	267	24	50	8 x 7	65
50 - 32	35	65	50	125	470	225	280	65	125	95	345	280	110	16	14	14	342	32	80	10 x 8	101
50 - 32H	35	65	50	125	470	225	280	65	125	95	345	280	110	16	14	14	342	32	80	10 x 8	101
65 - 13	25	80	65	100	360	160	180	65	125	95	280	212	110	14	14	14	267	24	50	8 x 7	40
65 - 16	25	80	65	100	360	160	200	65	125	95	280	212	110	14	14	14	267	24	50	8 x 7	44
65 - 20	25	80	65	100	360	180	225	65	125	95	320	250	110	14	14	14	267	24	50	8 x 7	54
65 - 20H	35H	80	65	100	454	180	225	65	125	95	320	250	110	14	14	14	328	32	80	10 x 8	81
65 - 26	35	80	65	100	470	200	250	80	160	120	360	280	110	16	18	14	342	32	80	10 x 8	83
65 - 32	35	80	65	125	470	225	280	80	160	120	400	315	110	16	18	14	342	32	80	10 x 8	110
65 - 32H	35	80	65	125	470	225	280	80	160	120	400	315	110	16	18	14	342	32	80	10 x 8	110
80 - 16	25	100	80	125	360	180	225	65	125	95	320	250	110	14	14	14	267	24	50	8 x 7	55
80 - 20	35	100	80	125	470	180	250	65	125	95	345	280	110	14	14	14	342	32	80	10 x 8	72
80 - 26	35	100	80	125	470	200	280	80	160	120	400	315	110	16	18	14	342	32	80	10 x 8	92
80 - 32	35	100	80	125	470	250	315	80	160	120	400	315	110	16	18	14	342	32	80	10 x 8	120
80 - 32H	35	100	80	125	470	250	315	80	160	120	440	315	110	16	18	14	342	32	80	10 x 8	120
80 - 40	45	100	80	125	532	280	355	85	160	120	440	340	110	16	18	14	368	42	110	12 x 8	162
100 - 20	35	125	100	125	470	200	280	80	160	120	360	280	110	16	18	14	342	32	80	10 x 8	87
100 - 26	35	125	100	140	470	225	280	80	160	120	400	315	110	16	18	14	342	32	80	10 x 8	110
100 - 32	35	125	100	140	470	250	315	80	160	120	400	315	110	16	18	14	342	32	80	10 x 8	134
100 - 40	45	125	100	140	530	280	355	100	200	150	500	400	110	18	23	14	370	42	110	12 x 8	177
125 - 20	35	150	125	140	470	250	315	80	160	120	400	315	110	16	18	14	342	32	80	10 x 8	110
125 - 26	35	150	125	140	470	250	355	80	160	120	400	315	110	18	18	14	342	32	80	10 x 8	115
125 - 32	45	150	125	140	530	280	355	100	200	150	500	400	110	18	23	14	370	42	110	12 x 8	165
125 - 40	45	150	125	140	530	315	400	100	200	150	500	400	110	18	23	14	370	42	110	12 x 8	190
125 - 50	60	150	125	180	680	375	500	100	200	150	550	450	140	24	24	14	500	55	110	16 x 10	225
150 - 20	35H	200	150	160	495	280	400	100	200	150	550	450	110	20	23	14	367	32	80	10 x 8	140
150 - 26	45	200	150	160	530	250	355	100	200	150	450	350	110	18	23	14	370	42	110	12 x 8	152
150 - 32	45	200	150	160	530	280	400	100	200	150	550	450	110	18	23	14	370	42	110	12 x 8	175
150 - 40	45	200	150	160	530	315	450	100	200	150	550	450	110	18	23	14	370	42	110	12 x 8	210
150 - 50	60	200	150	180	670	375	500	100	200	150	550	450	140	24	24	15	500	55	110	16 x 10	320
200 - 26	45	250	200	180	546	280	400	100	200	150	550	450	110	25	26	15	389	42	110	12 x 8	205
200 - 32	55	250	200	200	670	355	450	100	200	150	550	450	110	20	24	15	500	48	110	14 x 9	320
200 - 40	55	250	200	200	670	355	500	100	200	150	550	450	110	20	24	15	500	48	110	14 x 9	350
200 - 50	75	250	200	240	783	425	545	160	300	240	720	600	140	30	27	23	534	70	140	20 x 10	450
250 - 32	55	300	250	200	670	355	525	100	250	175	600	500	110	24	23	14	511	48	110	14 x 9	400
250 - 40	60	300	250	250	670	400	500	120	300	250	710	600	110	25	24	14	511	55	110	16 x 10	480
250 - 50	75	300	250	240	783	425	545	160	300	240	720	600	140	30	27	23	534	70	140	20 x 10	500
300 - 40	75	350	300	280	783	500	600	150	300	200	800	660	140	40	27	23	550	70	140	20 x 10	548



Branch Size	32	40	50	65	80	100	125	150	200	250	300	350
k	100	110	125	145	160	180	210	240	295	355	410	470
n-d2	4 - Φ18	4 - Φ18	4 - Φ18	4 - Φ18	8 - Φ18	8 - Φ18	8 - Φ18	8 - Φ22	12 - Φ22	12 - Φ25	12 - Φ25	16 - Φ25
D	140	150	165	185	200	220	250	285	340	405	460	520

* Flange dimensions and drilling in accordance with ISO 2084 - 16BAR (BS 4504-1969 TABLE 16/11)
 * Holes are equally spaced straddling pump centreline.